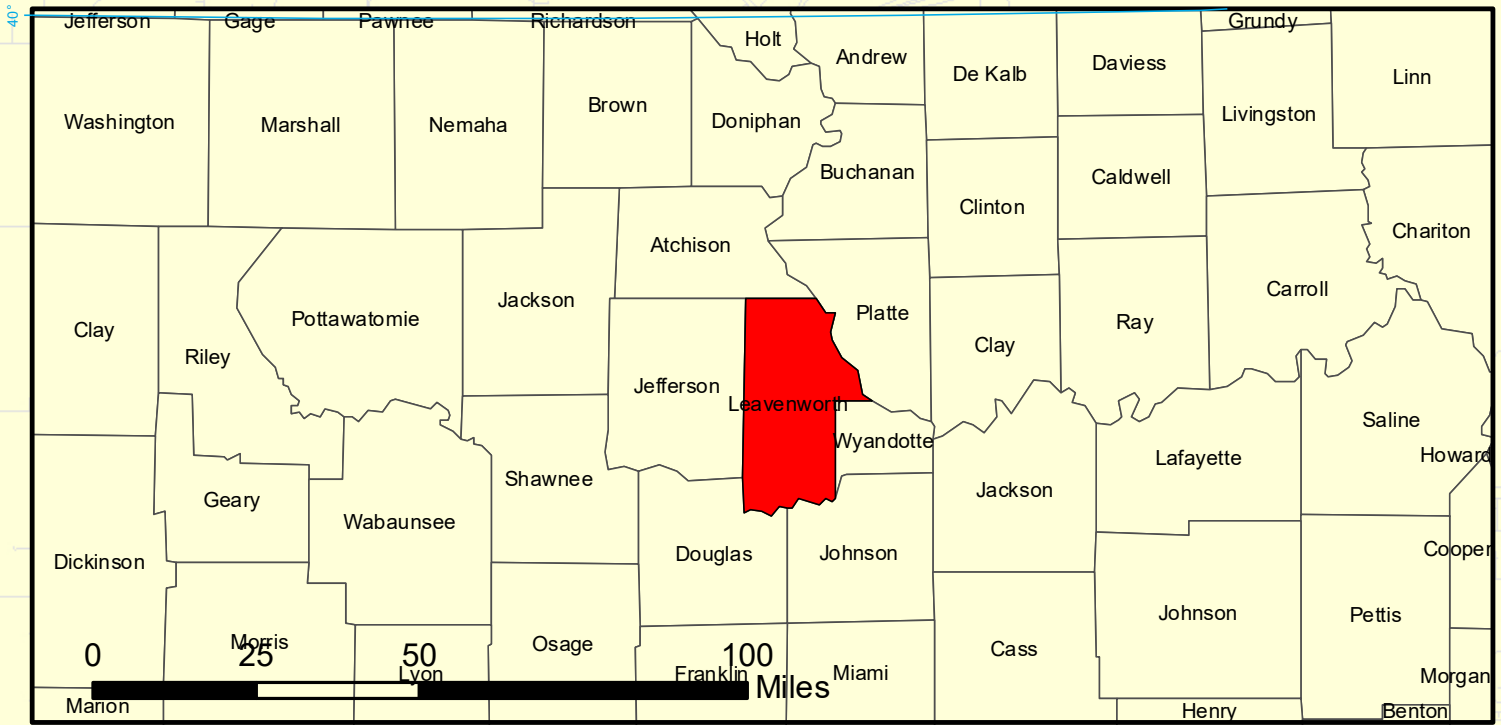
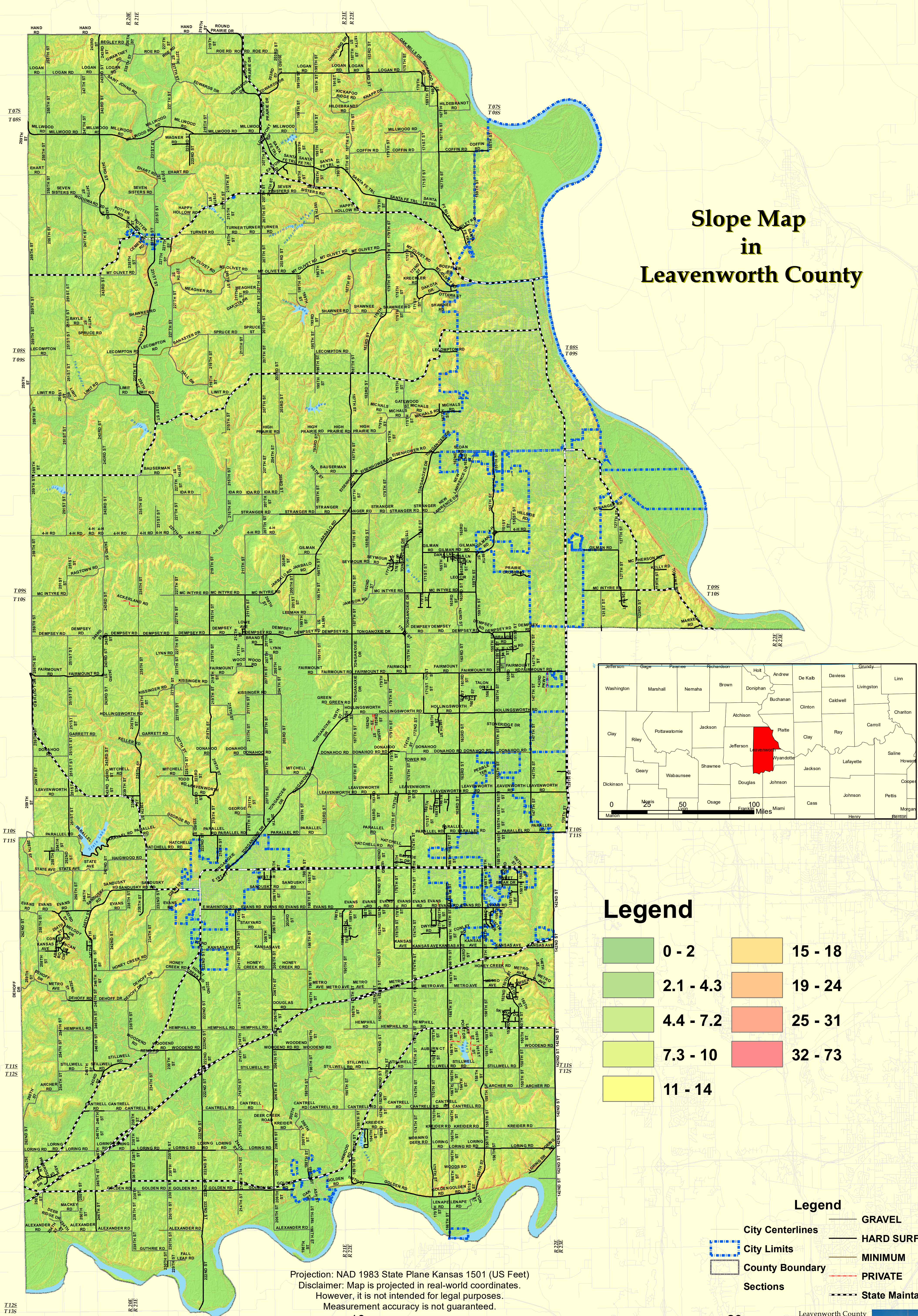




LEAVENWORTH COUNTY KANSAS 2025



Slope Map in Leavenworth County

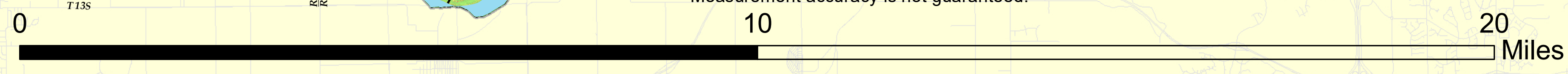


Legend

	0 - 2		15 - 18
	2.1 - 4.3		19 - 24
	4.4 - 7.2		25 - 31
	7.3 - 10		32 - 73
	11 - 14		

	City Centerlines		GRAVEL
	City Limits		HARD SURFACE
	County Boundary		MINIMUM
	Sections		PRIVATE
			State Maintained

Projection: NAD 1983 State Plane Kansas 1501 (US Feet)
 Disclaimer: Map is projected in real-world coordinates.
 However, it is not intended for legal purposes.
 Measurement accuracy is not guaranteed.



Leavenworth County GIS Services
 300 Walnut Suite 030
 Leavenworth, KS 66048
 Ph: 913-758-6780
 Ph: 913-684-0443

